

FORMER WISCONSIN CHEESE GROUP FACILITY
1722 12th Street
Monroe, WI

Previous natural cheese plant operated by Wisconsin Cheese Group. Consolidation of operations precipitated the closing of this facility.

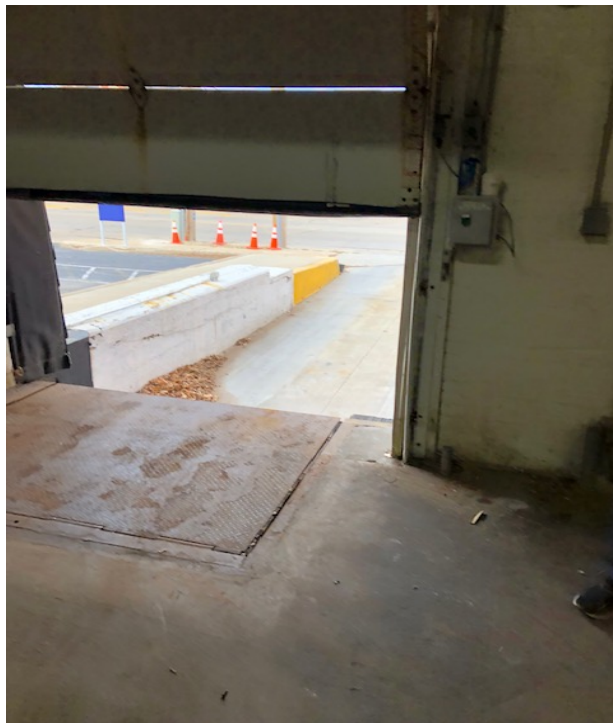
Previous Certifications

- SQF2
- Kosher
- EU
- FDA
- State of Wisconsin

Assets Include

- 15,000 sq ft facility and 3 acres of land
- Any remaining cheese making and processing equipment
- Any cooling units for warehouse and racking
- Any production and packaging equipment in the facility

**** This previous natural cheese plant has no intake building so it is probably better suited for a packaging plant or further cheese processing.**





ASKING PRICE – \$400,000

Contact: Jim Cisler
Dairy Assets LLC - *"Your Resource for Everything Dairy"*
Phone: 608-835-7705
Email: jimcisler7@gmail.com
www.dairyassets.weebly.com